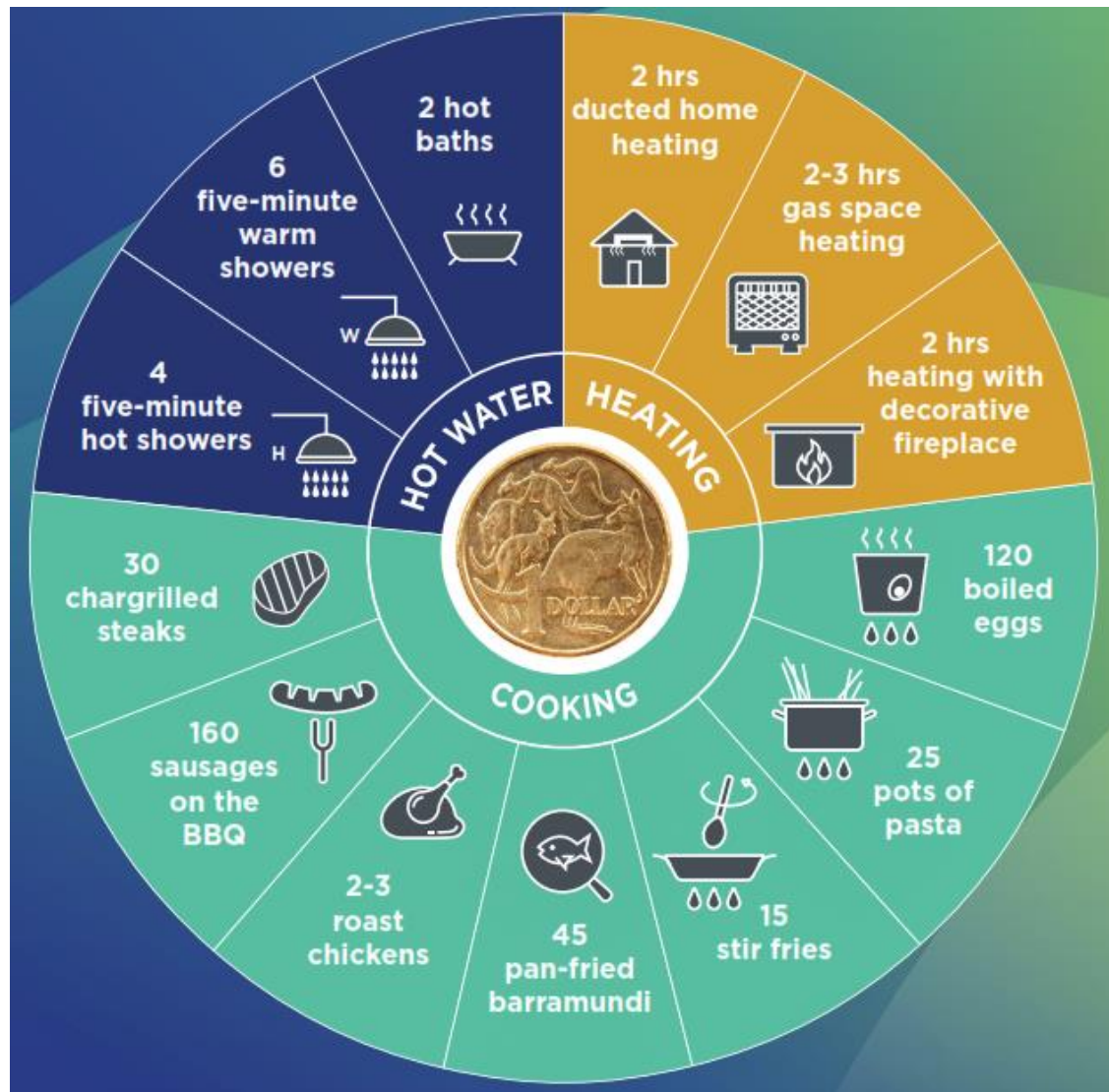


**\$1 of gas gets me...**

ENA Dennis Van Puyvelde - 11 June 2020



**Gas Appliance  
Manufacturers  
Association of  
Australia**



.... and 75% less CO2 emissions compared to average National Electricity Market grid electricity



**2 hot baths**

We assume 100 litres as per GWM Water figures. Using storage hot water, 74 litres of water heated to 45 degrees uses 17 MJ. Adjusting linearly to heat 100 litres of water 40 degrees uses 20.4 MJ, and \$1 gets you 2 hot baths.



**4 five-minute hot showers**

Using either storage or hot water calculations, but adjusted linearly for 45 degree rise instead of 30 degree rise leads to 20 minutes in the shower for \$1.



**2 hrs ducted home heating**

Usage based on maintaining 20 degrees. Sustainability Victoria indicates running 6-star gas ducted heating for a 2-star 160 m<sup>2</sup> melbourne house would cost \$1285 p.a running 15 hrs a day on weekends and 9 hrs a day on weekdays. Adjusting for 4-star home, increasing gas cost from \$2.17 to \$2.50 c/MJ, assuming full winter use and 1/3 autumn and spring use indicates 2,650 hrs of use for \$1285, or 2 hours per dollar.



**2-3 hrs gas space heating**

Based on the 4.4 star Rinnai Ultima 2 using 15 MJ per hour to actively heat a room.



**2 hrs heating with decorative fireplace**

Based on the Rinnai 5.5 star 1250 Gas Fireplace using between 10-34 MJ per hour. We have assumed 20 MJ per hour usage of a gas fireplace.

**GAS  
Connections**